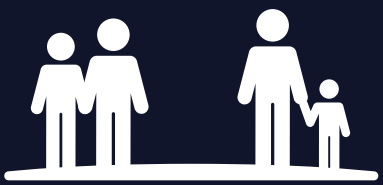


From Monday 9 November, there are new rules to keep Wales safe



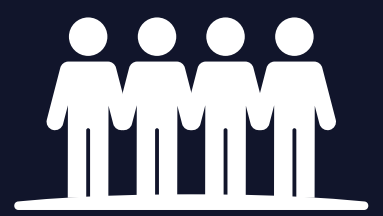
Limit the amount of people we spend time with



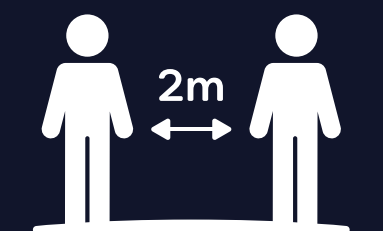
We can form an extended household
with one other household



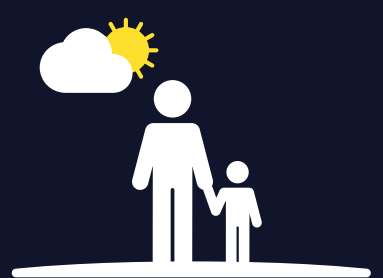
Stay out of each other's homes unless you have
formed an extended household



We can meet up to four people outdoors, and
in regulated settings such as cafes, pubs and
restaurants



Maintain social distancing when near people
outside our extended households



Limit the times you leave home
and the distance you travel



Work from home where possible

But we all need to think about what
we **should do**, rather than what we **can do**

Together, we can keep Wales safe

Check the rules online
gov.wales/coronavirus

